


AZ CONSULT, spol. s r.o.

Číslo zakázky.....16/319
Výrobek uvolněn k použití







Souřadný systém: S-JTSK
Výškový systém: S-ČJNS BALT P.V.

Datum.....30.6.2017③

1
Revize:	Datum:	Vypracoval:	Podpis:	Kontroloval:	Podpis:	Poznámka:
Objednatel.: Správa železniční dopravní cesty, státní organizace				<div>Sdružení Železná Ruda - Plzeň</div> <div>AZCONSULT® spol. s r. o.</div> <div> TÝM DOPRAVNÍHO INŽENÝRSTVÍ s.r.o. <i>Renaissance of Quality</i></div>		
Odpov. proj.: Ing. M. Komín		Zak. číslo: 16/319				
Kontroloval: Ing. J. Šíma		Datum: VI / 2017				
DOKUMENTACI LZE UŽÍVAT POUZE VE SMYSLU PŘÍSLUŠNÉ SMLOUVY O DÍLO. KOPÍROVÁNÍ A ROZŠÍŘOVÁNÍ POUZE PO PŘEDCHOZÍM SOUHLASU AZ CONSULT spol. s r.o.						

Odpov. proj.: Ing. M. Komín		<div>AZCONSULT® spol. s r. o.</div> <div>Klíšská 12, 400 01 Ústí nad Labem Tel.: 475 240 888 Tel/fax.: 475 240 863 E-mail: azconsult@azconsult.cz ČSN EN ISO 9001</div>
Vypracoval: Ing. E. Pšeničný		
Kontroloval: Ing. J. Šíma		
Kraj: Plzeňský kraj	Místo: Hojsova Stráž	
Objednatel: Správa železniční dopravní cesty, s.o.		
Akce: Sanace skalních objektů v km 5,550 - 19,280 trati Železná Ruda - Plzeň		Zn. souboru: .
Objekt: SO 04 - km 18,860 - 19,280		Stupeň: P Formát: 14 x A4
Výkres: Podrobné pohledy		Č. zak.: 16/319 Č. paré : Datum: VI / 2017 Měřítko: Č. přílohy: 4E.1.5.5
DOKUMENTACI LZE UŽÍVAT POUZE VE SMYSLU PŘÍSLUŠNÉ SMLOUVY O DÍLO. KOPÍROVÁNÍ A ROZŠÍŘOVÁNÍ POUZE PO PŘEDCHOZÍM SOUHLASU AZ CONSULT spol. s r.o.		

Legenda čar:

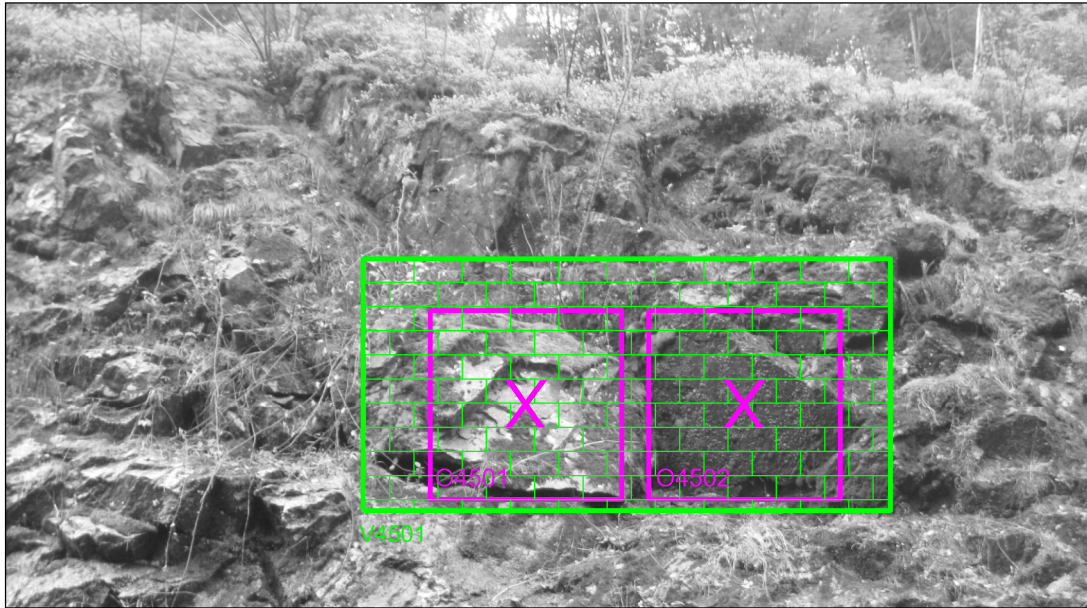
	sitování
	kotvení
	vyzdívka
	odstranění
	oplocení
	ochrana



km 18,880 P



km 18,890 P



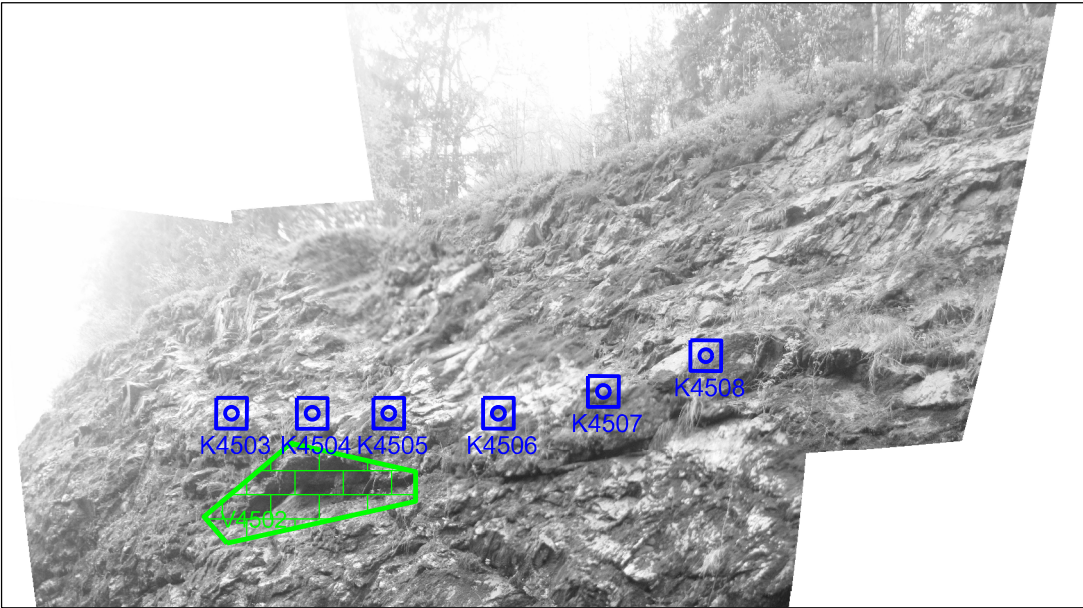
km 18,900 P



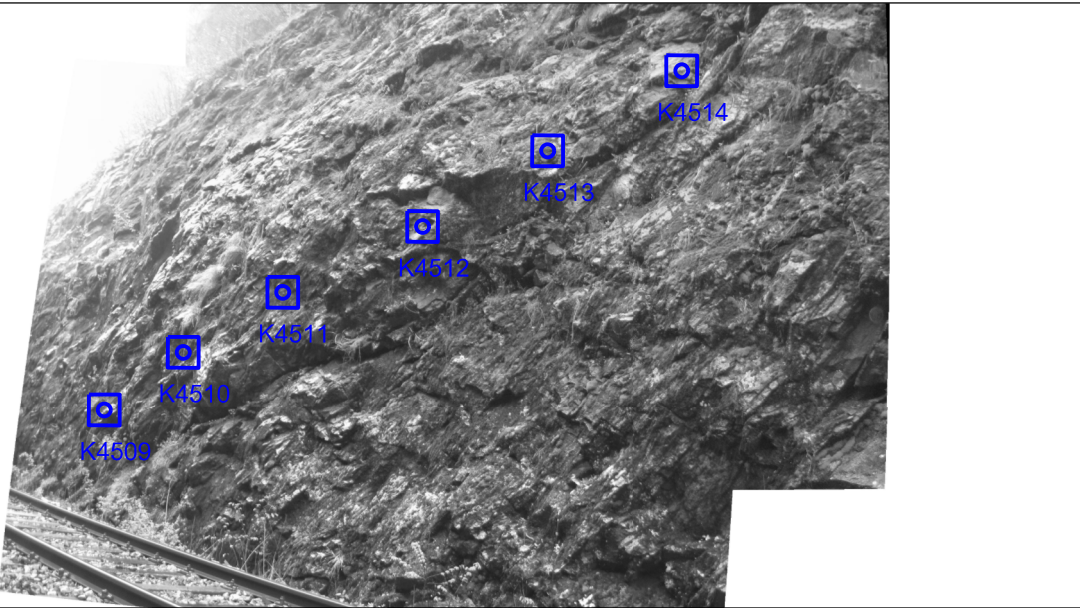
km 18,907 P



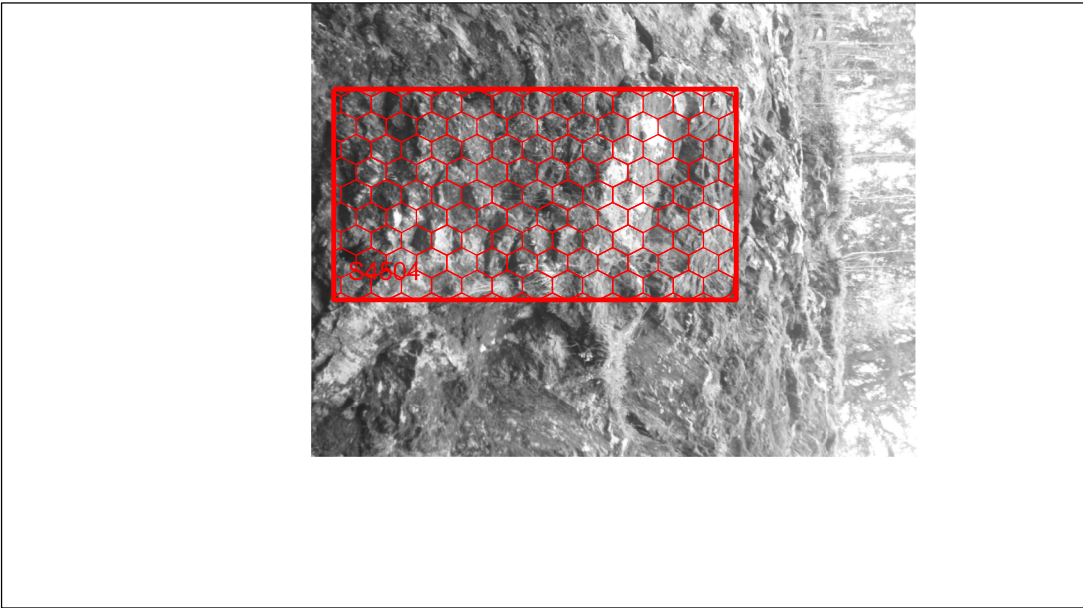
km 18,925 P



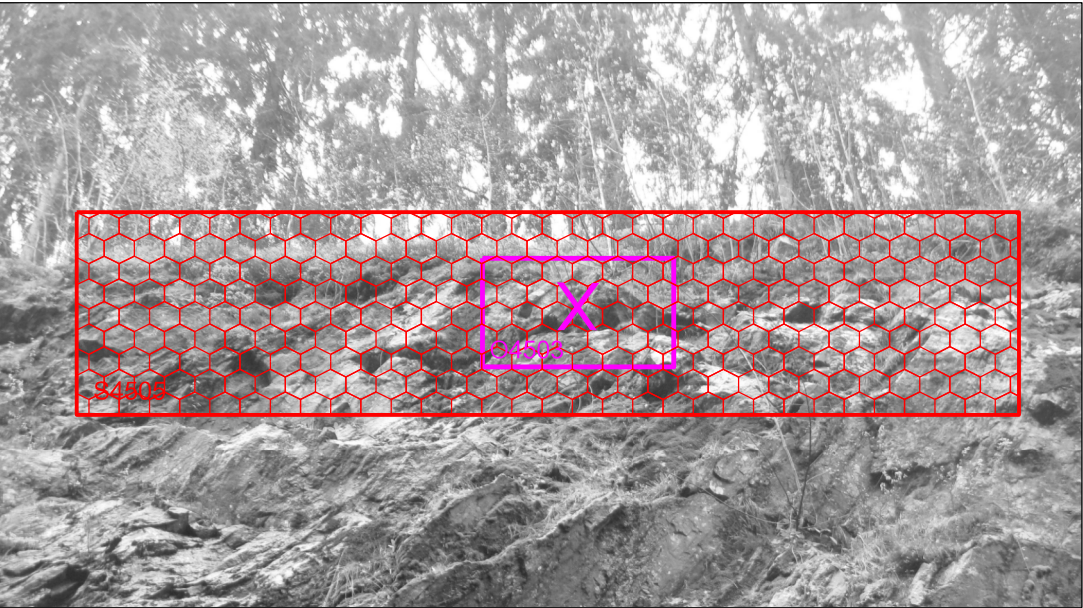
km 18,927 P



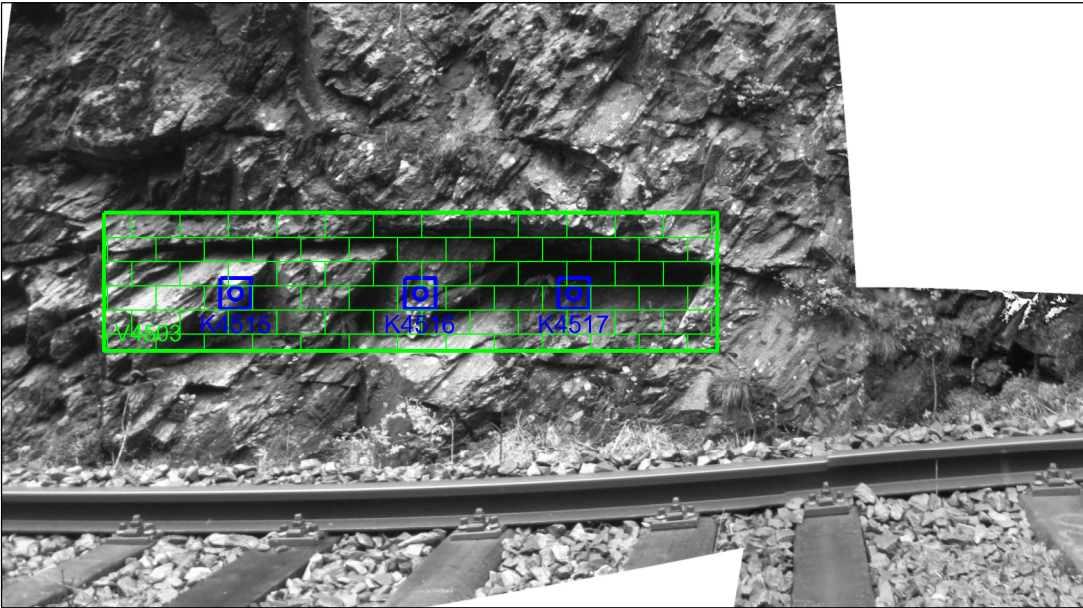
km 18,944 P



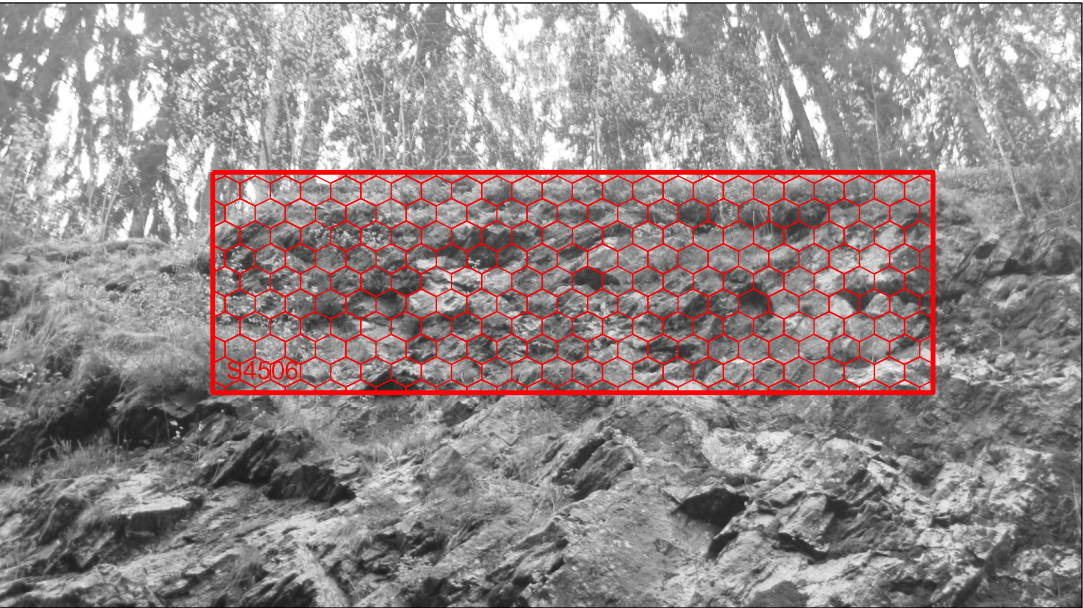
km 18,955 P



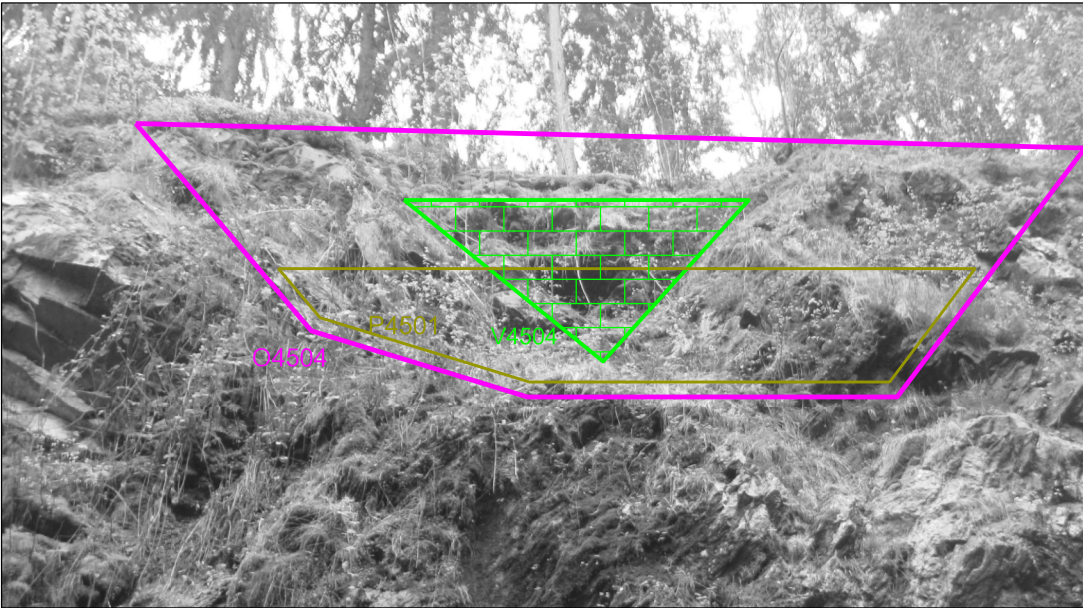
km 18,965 P



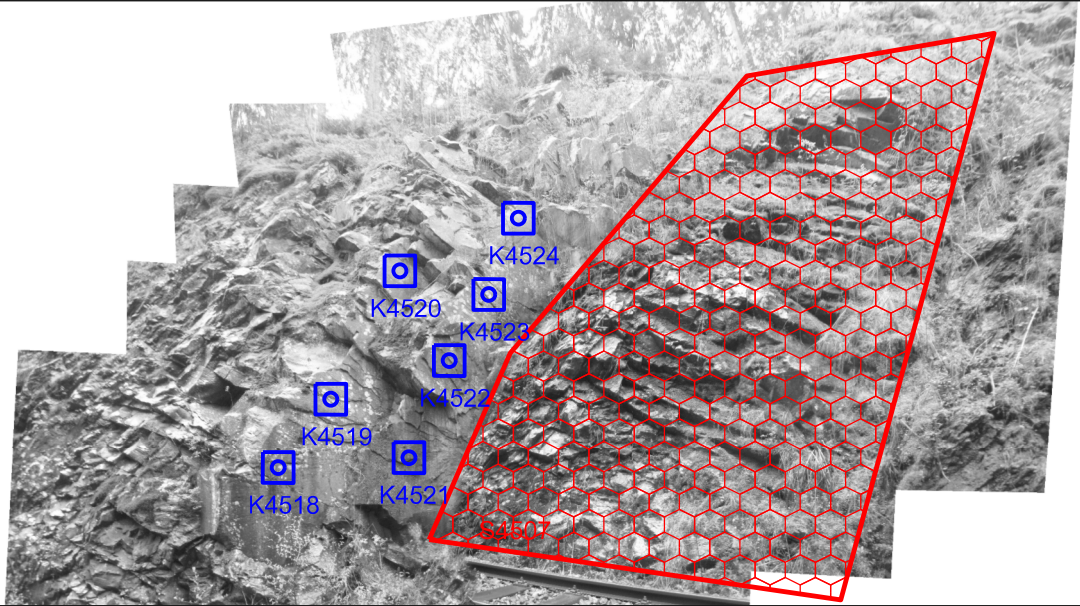
km 18,970 P



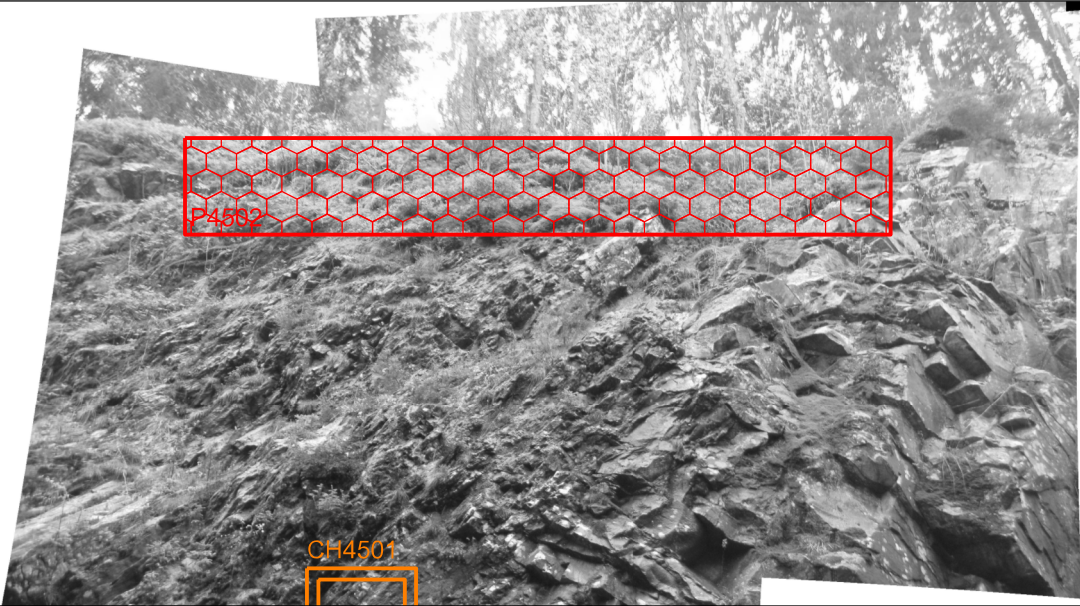
km 18,975 P



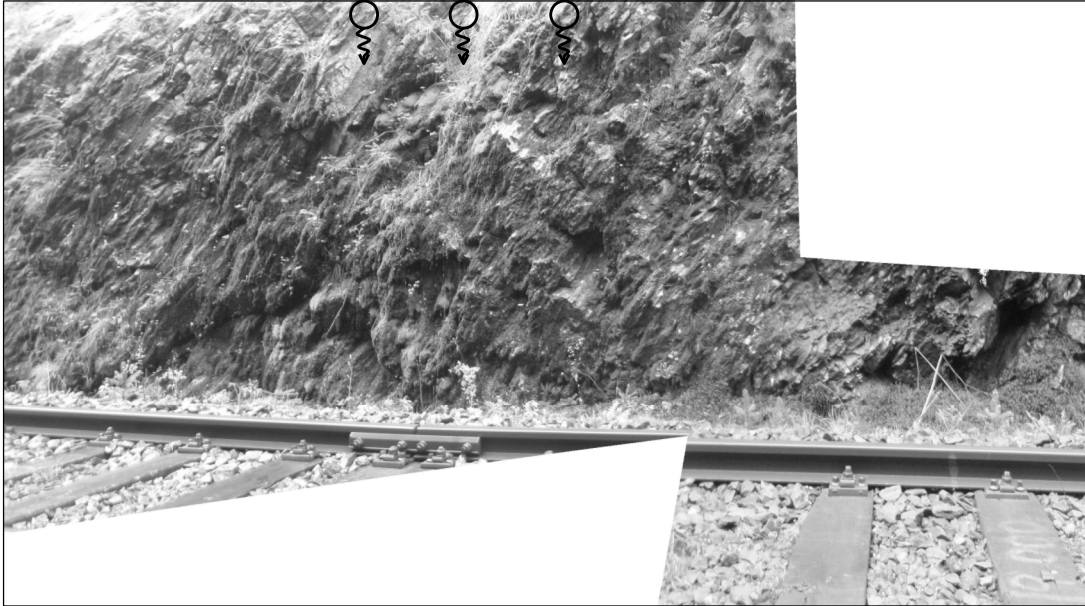
km 18,980 P



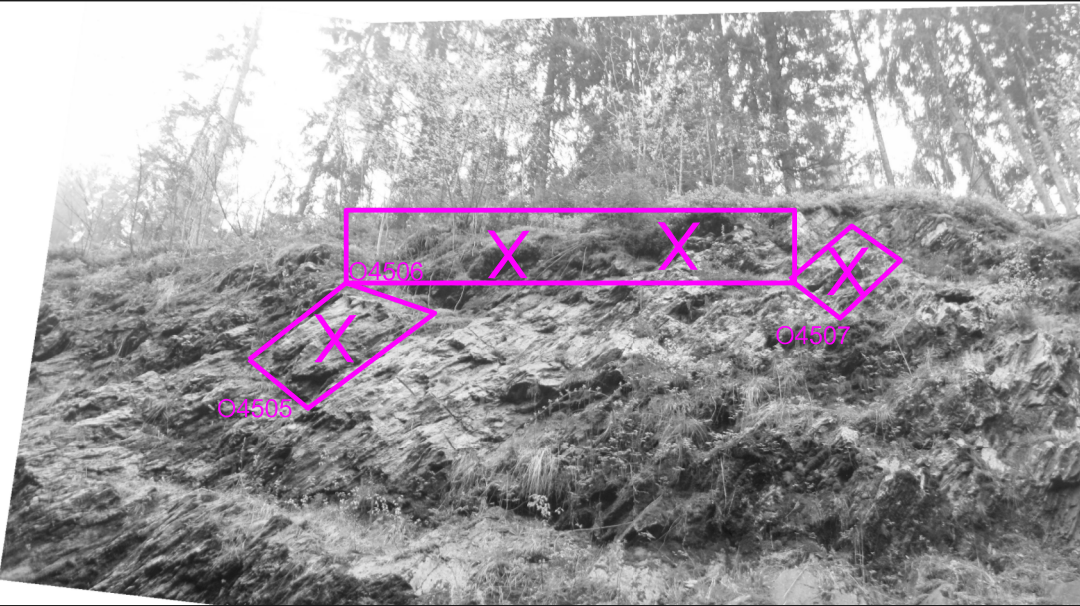
km 18,989 P



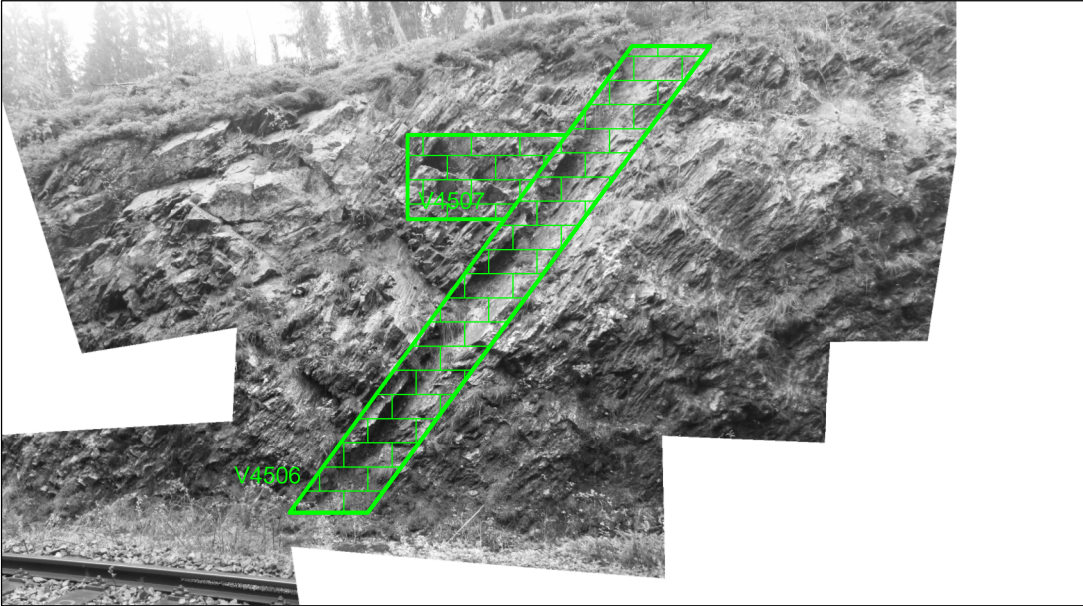
km 19,000 P



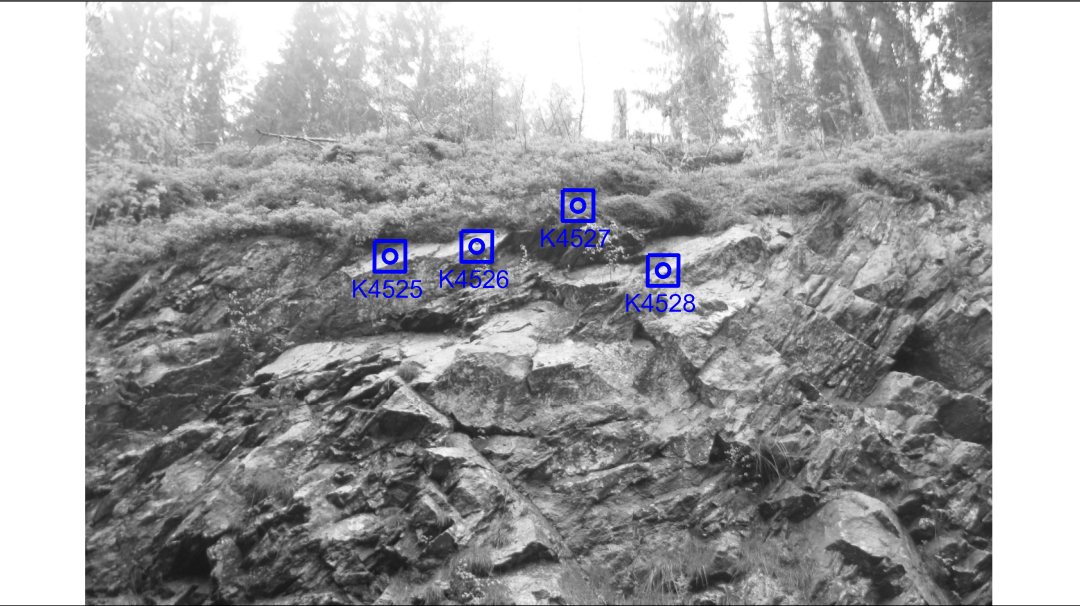
km 19,005 P



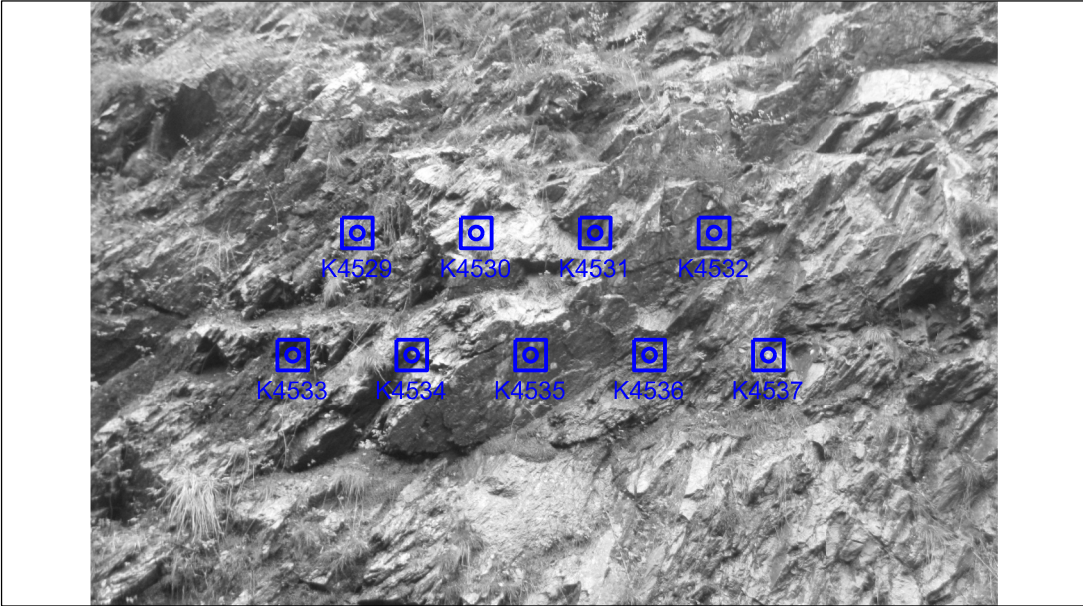
km 19,015 P



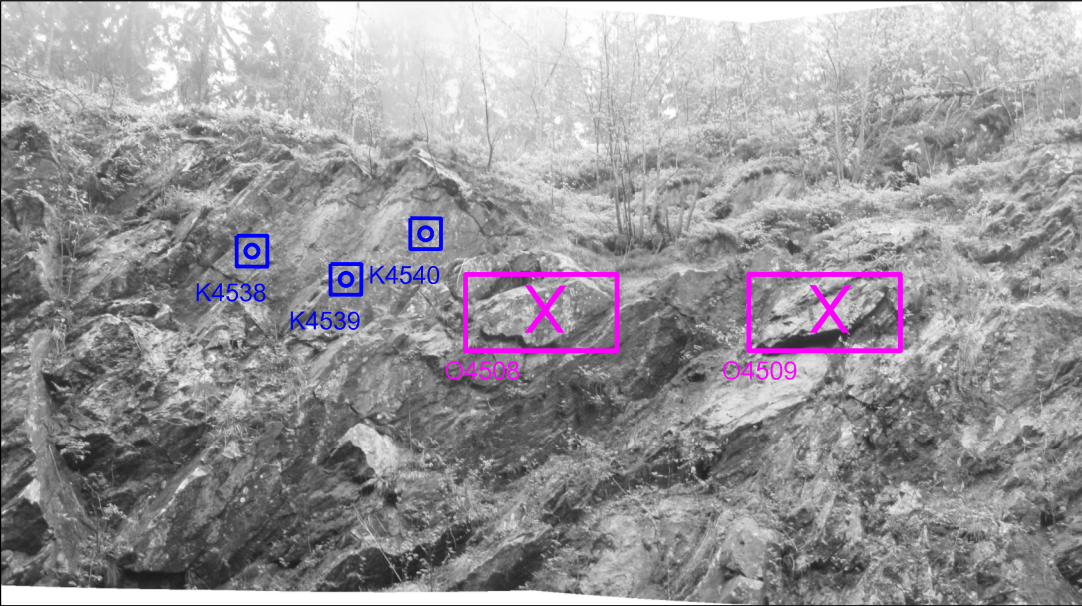
km 19,025 P



km 19,030 P



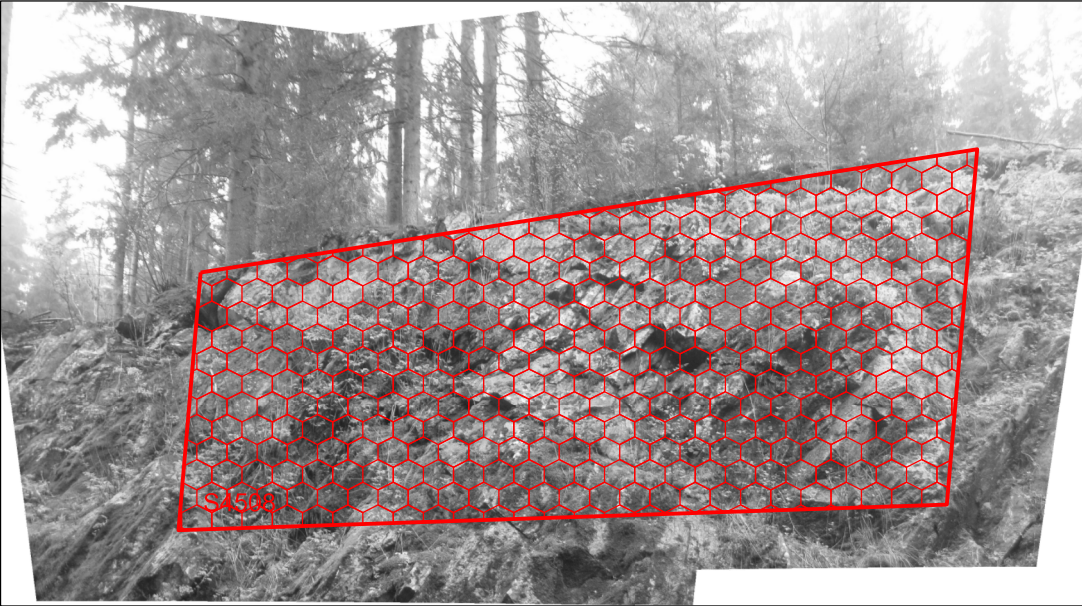
km 19,040 P



km 19,050 P



km 19,065 P



km 19,065 P



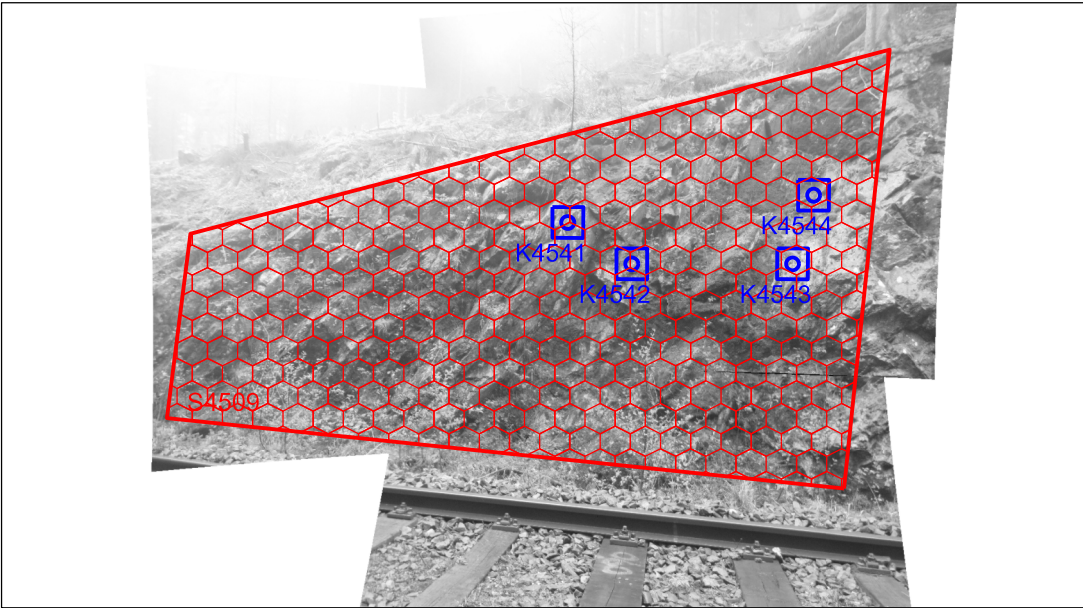
km 19,070 P

Sanace skalních objektů v km 5,550 - 19,280 trati Železná Ruda - Plzeň

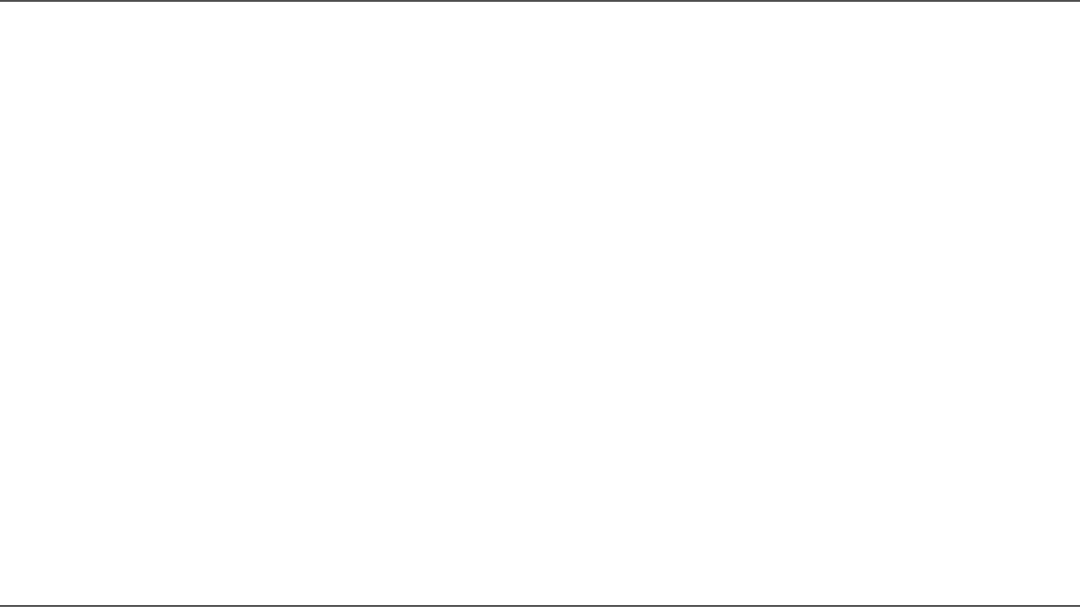
SO 04 - km 18,800 - 19,280



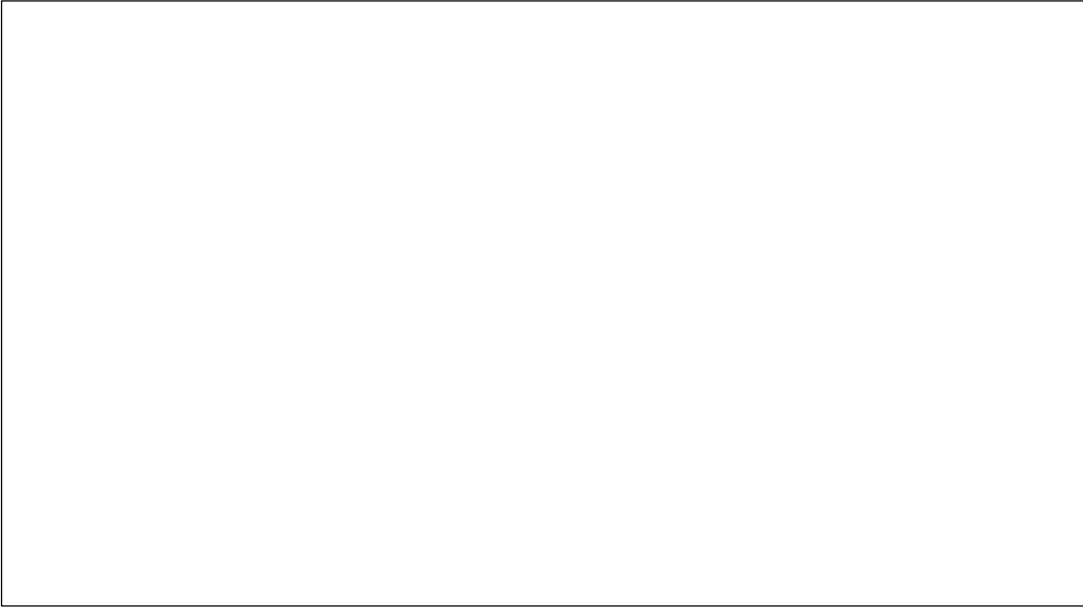
km 19,075 P



km 19,085 P



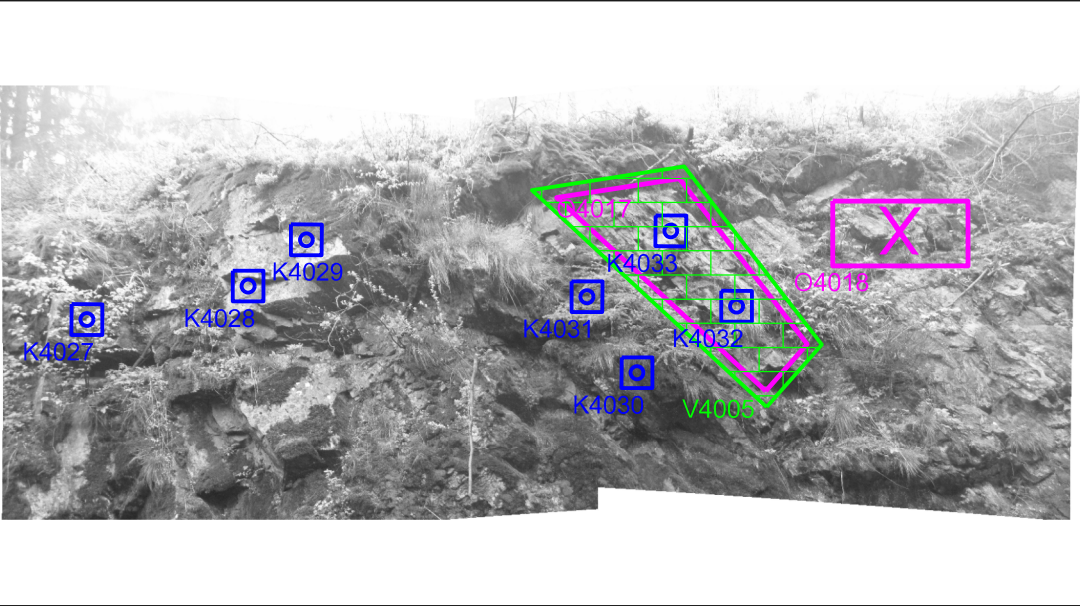
km



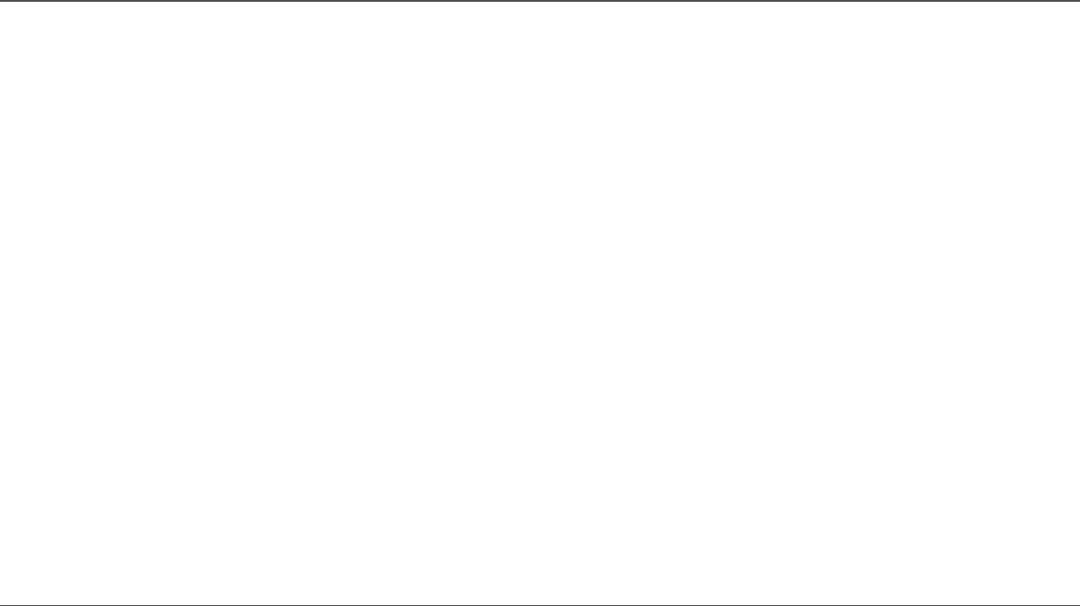
km

Sanace skalních objektů v km 5,550 - 19,280 trati Železná Ruda - Plzeň

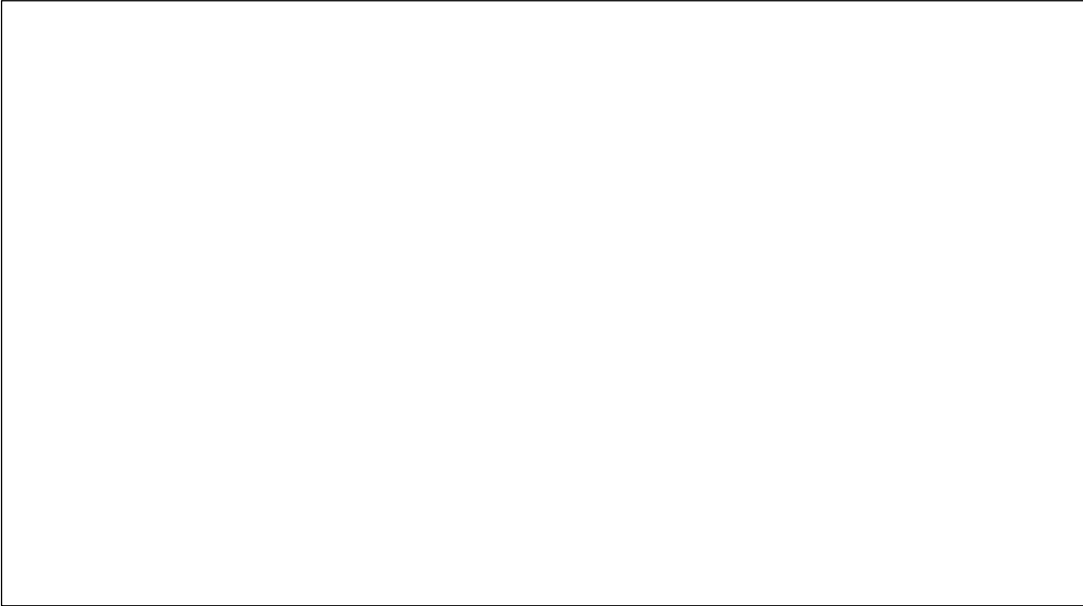
SO 04 - km 18,800 - 19,280



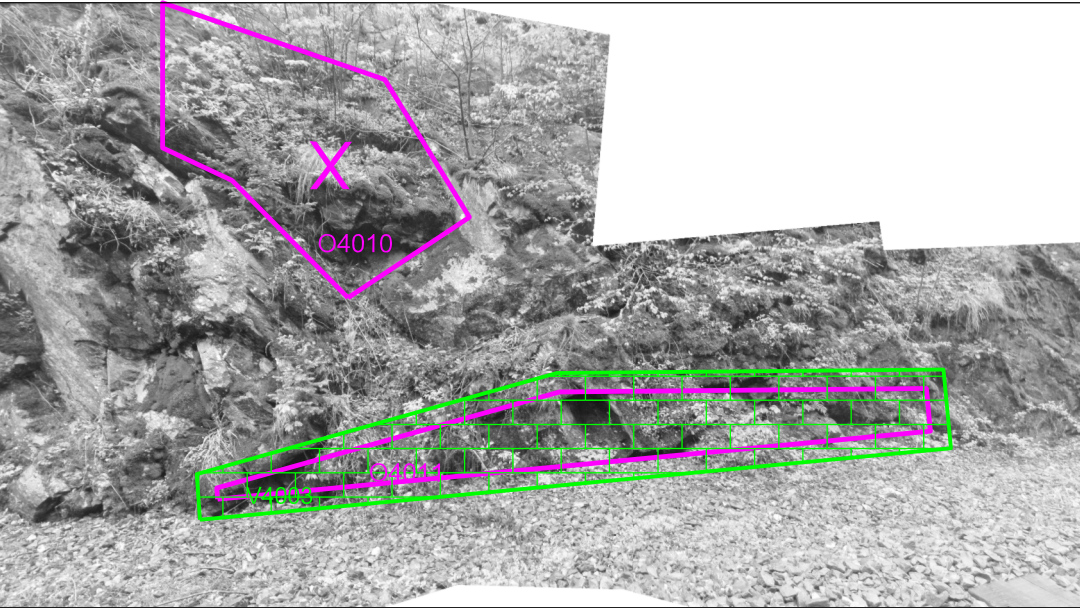
km 18,900 L



km



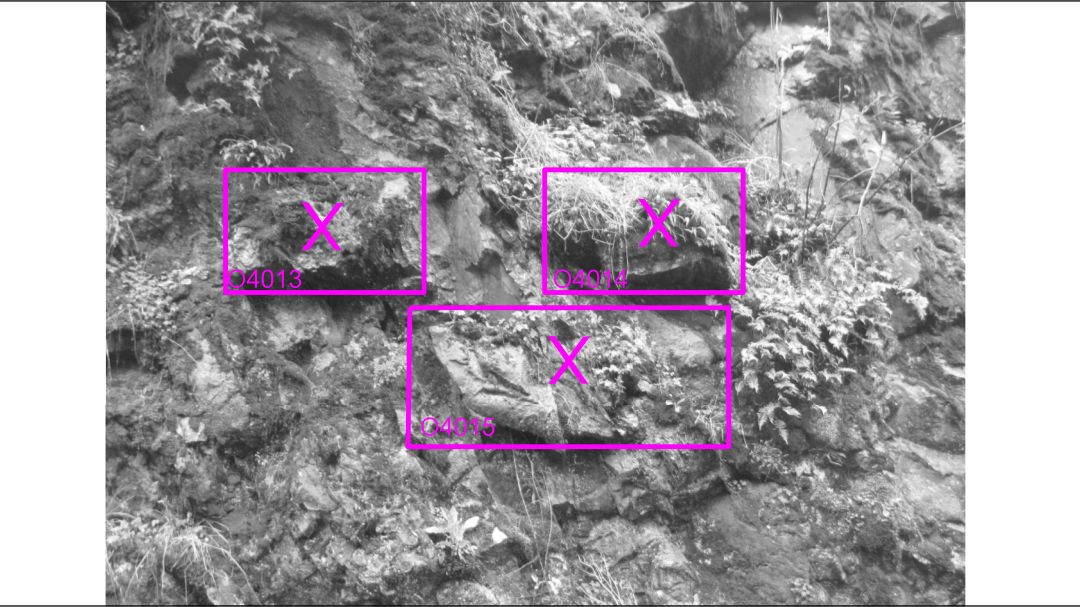
km



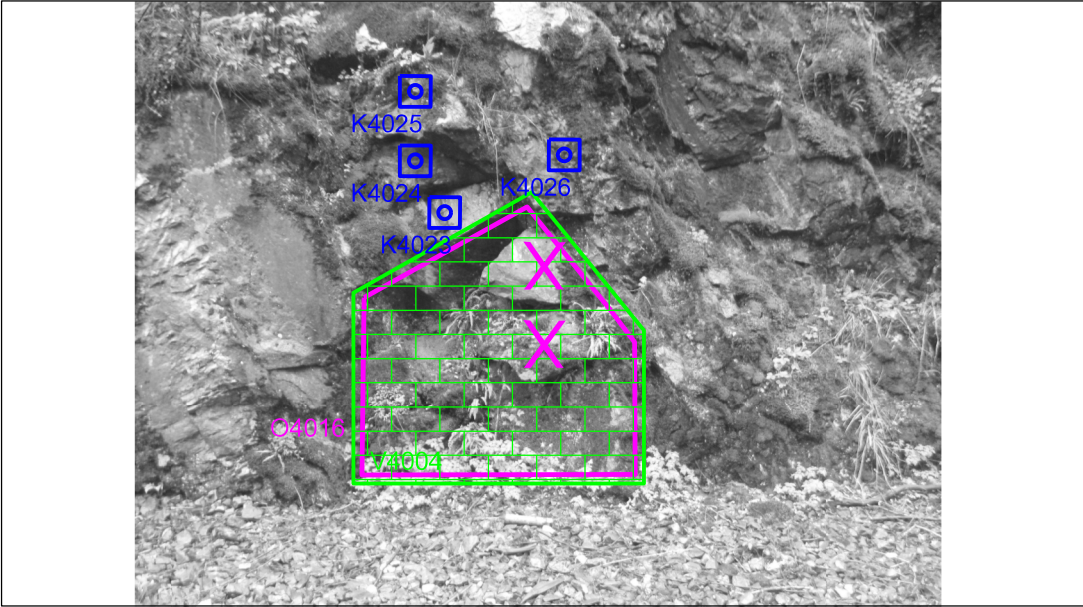
km 18,925 L



km 18,917 L



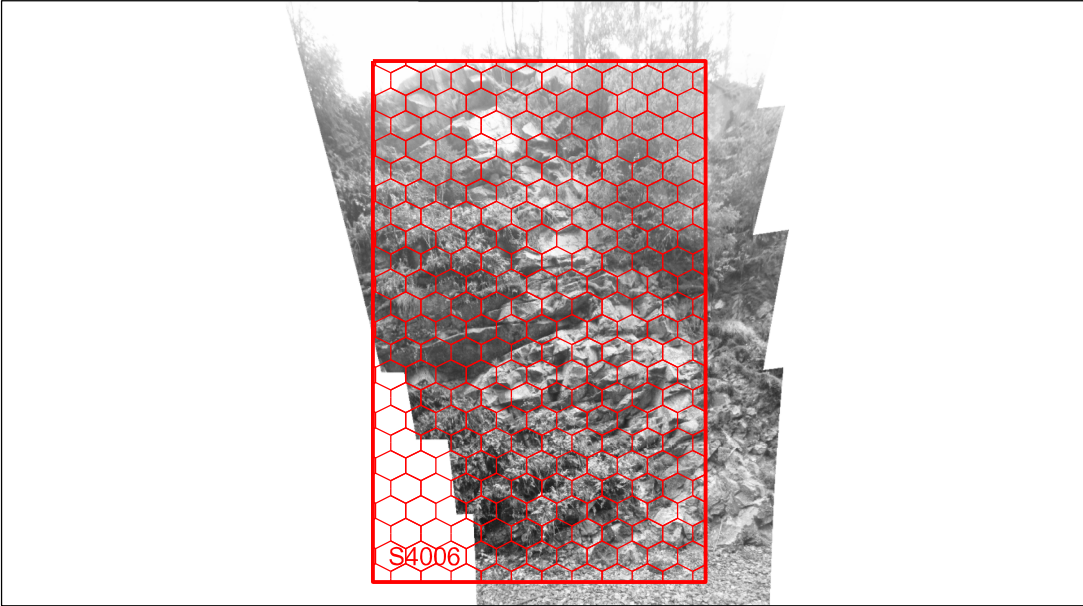
km 18,915 L



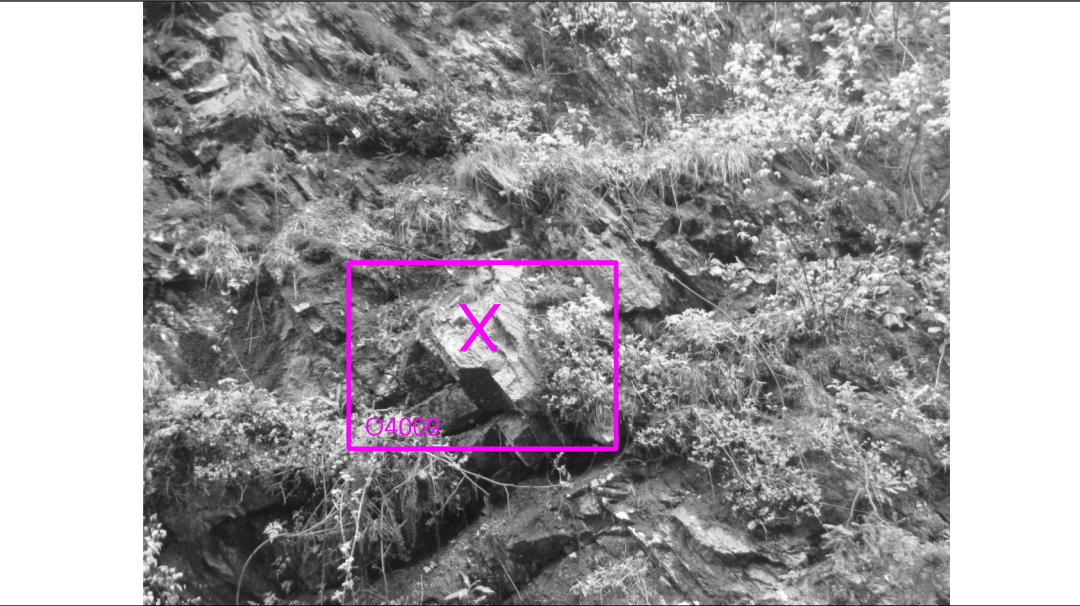
km 18,910 L



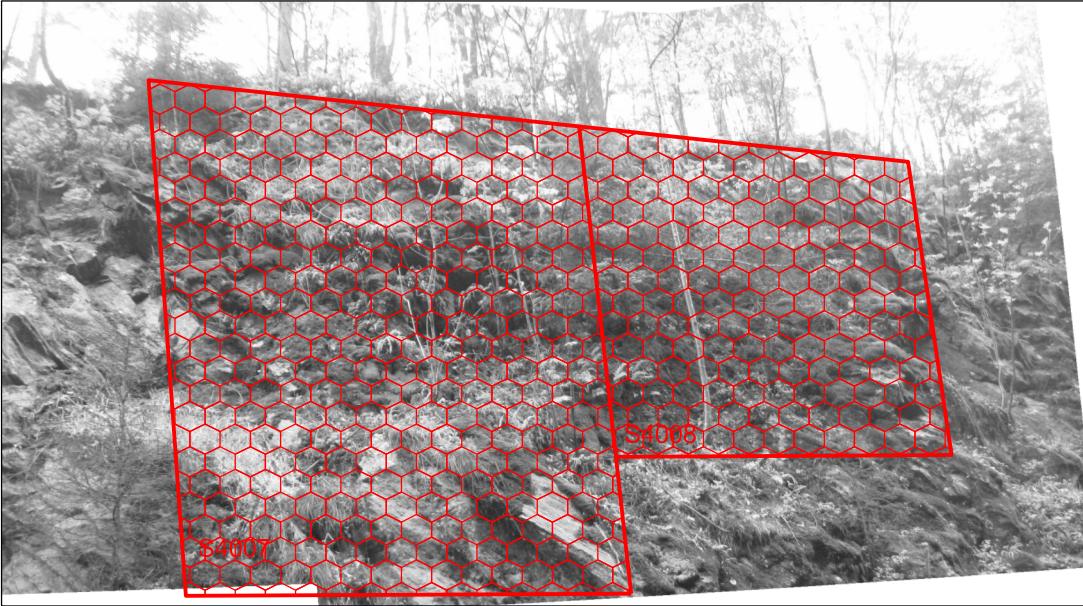
km 18,990 L



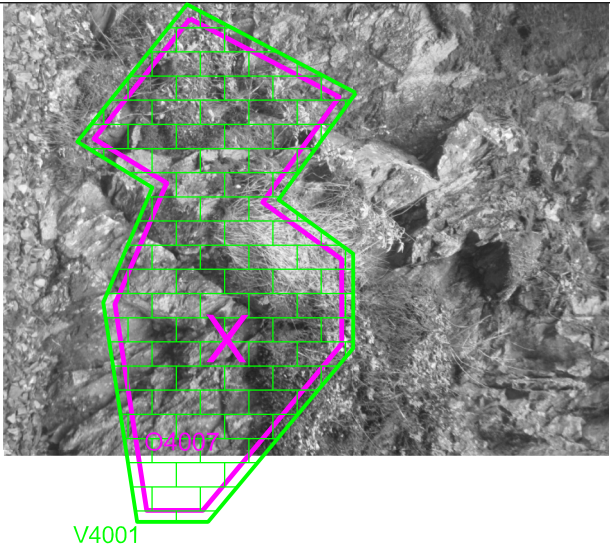
km 18,985 L



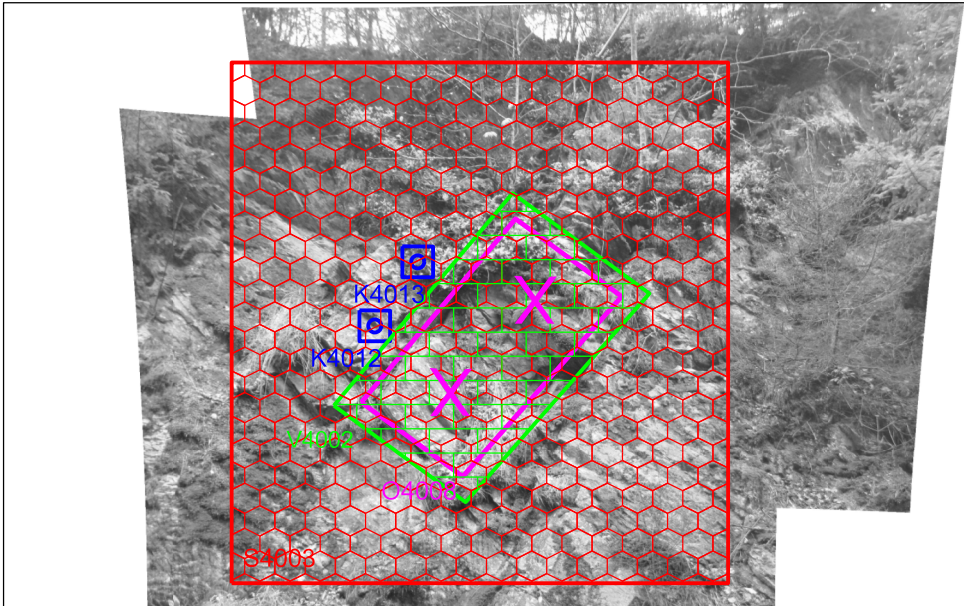
km 18,965 L



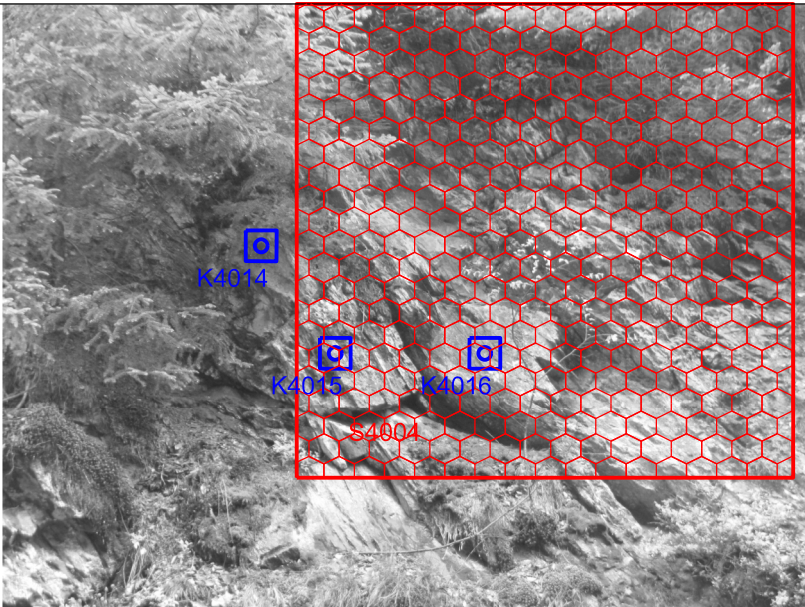
km 18,950 L



km 19,036 L



km 19,031 L



km 19,020 L



km 19,000 L

Sanace skalních objektů v km 5,550 - 19,280 trati Železná Ruda - Plzeň

SO 04 - km 18,800 - 19,280



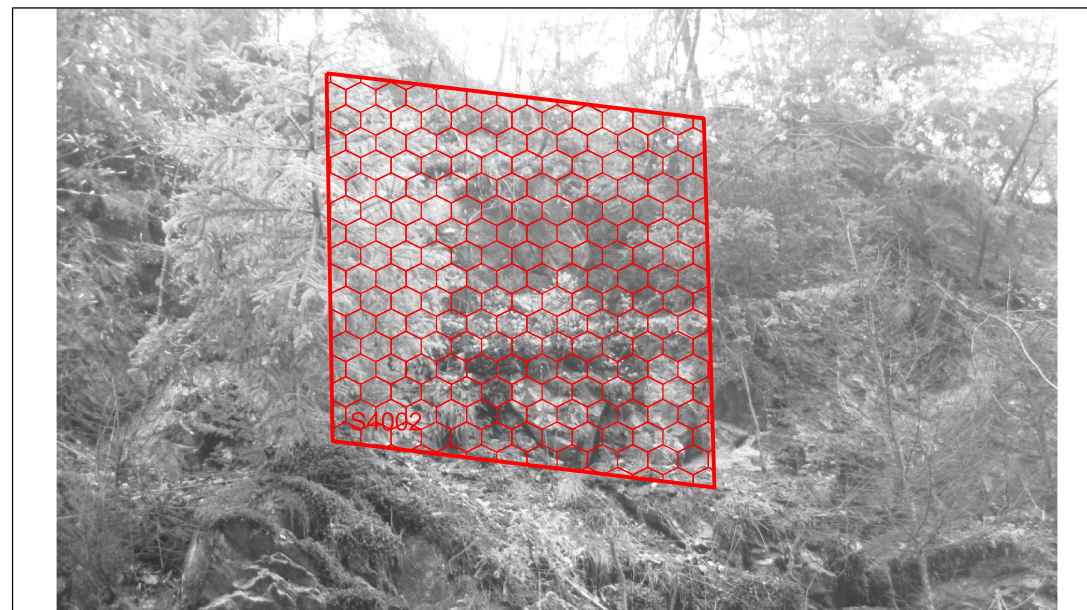
km 19,047 L



km 19,052 L



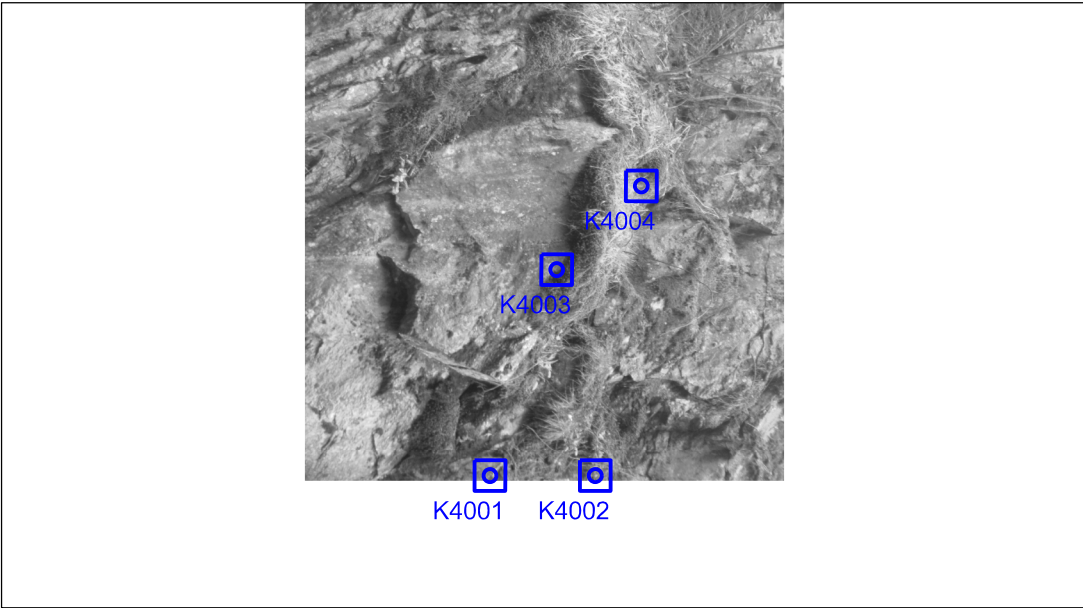
km 19,044 L



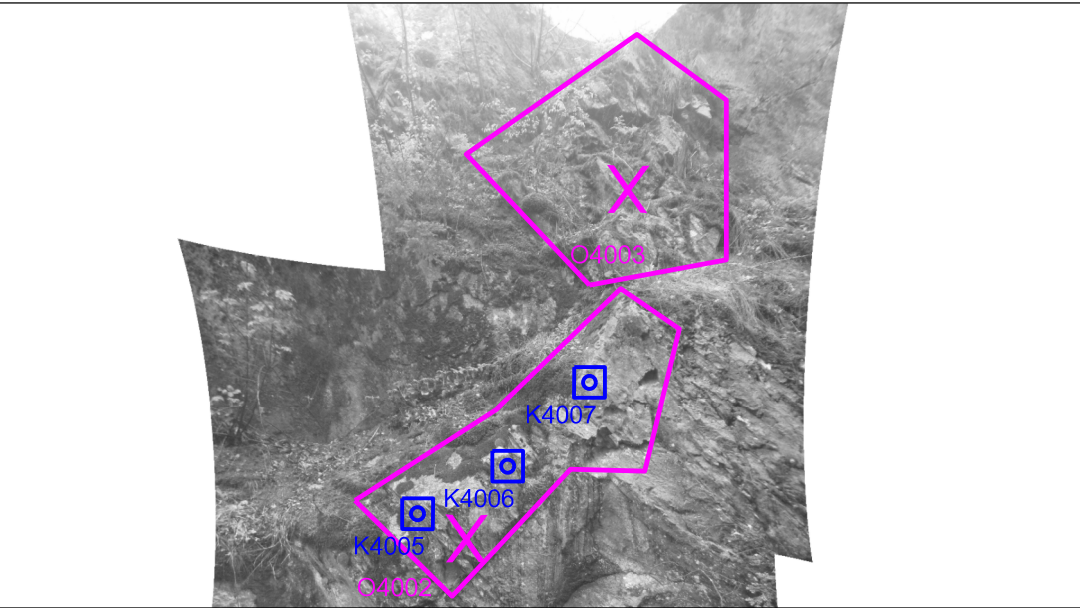
km 19,043 L



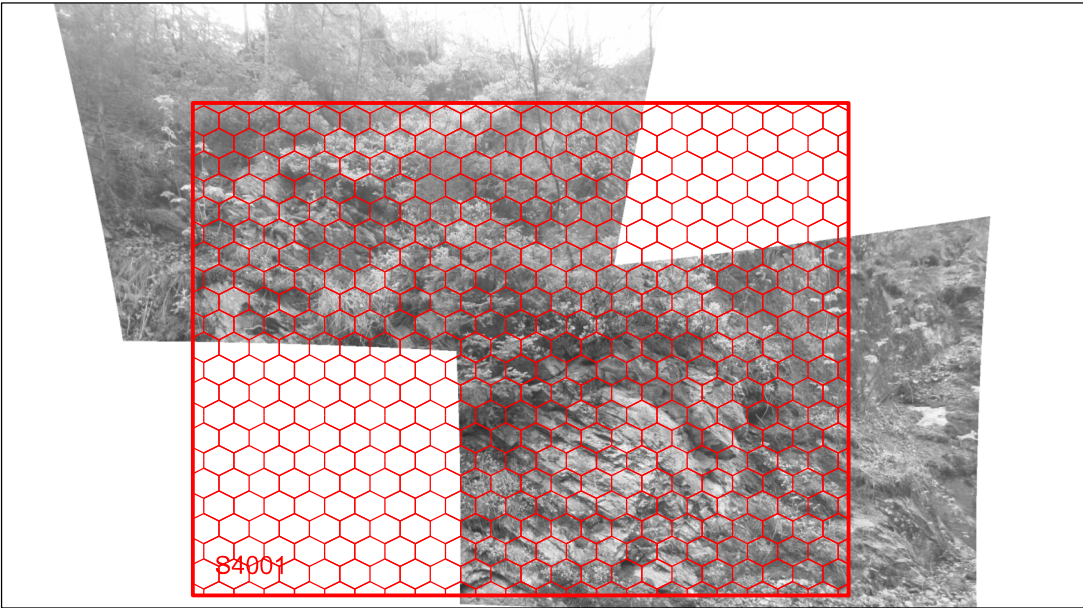
km 19,097 L



km 19,080 L



km 19,066 L



km 19,059 L